

# **THD** HRStation

The ultimate system for the screening and treatment of precancerous lesions of the anus.

Document intended for Health Care Professionals only.  
Distribution of this document is restricted to the U.S.A.



# THD<sup>®</sup> HRStation

The ultimate system for the screening and treatment of precancerous lesions of the anus.

THD<sup>®</sup> HRStation is the first and only specific system for diagnosing and treating precancerous lesions of the anus.

THD<sup>®</sup> HRStation is a system which is able to **supply high-resolution videos and images (4K) of the anal canal and the perianal area** through the combination of a 4K video camera with a very high-performance work station and dedicated software.

The disposable THD<sup>®</sup> Light-Scope Procto HRA complements the THD<sup>®</sup> HRStation by eliminating the need for an external light source. The large side windows on the camera connection give easy access to the area under examination for biopsies and ablative treatments.

## WHAT CAN IT DO?

### DIAGNOSIS

High-resolution anoscopy performed with THD<sup>®</sup> HRStation is one of the most effective tests for **screening neoplastic anal intraepithelial lesions, particularly anal carcinomas**.

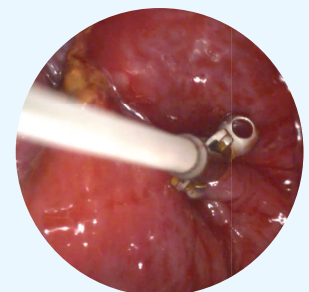
A customized setting of the THD<sup>®</sup> Procto Software combined with the THD<sup>®</sup> 4K CAM **optimizes the image** after administration of Lugol's solution and acetic acid and **helps highlight the lesions**.



### BIOPSY

Once an abnormality has been identified during the diagnosis, a **biopsy** is carried out with the aim of identifying any dysplastic cells.

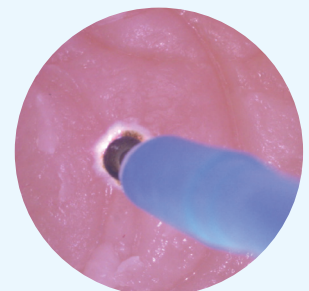
The **large side windows** of the THD<sup>®</sup> Light-Scope Procto HRA anoscope give access to the area under examination, without the need to remove the camera. It is then also possible to carry out **the insertion of any biopsy forceps with magnified vision**.



### TREATMENT

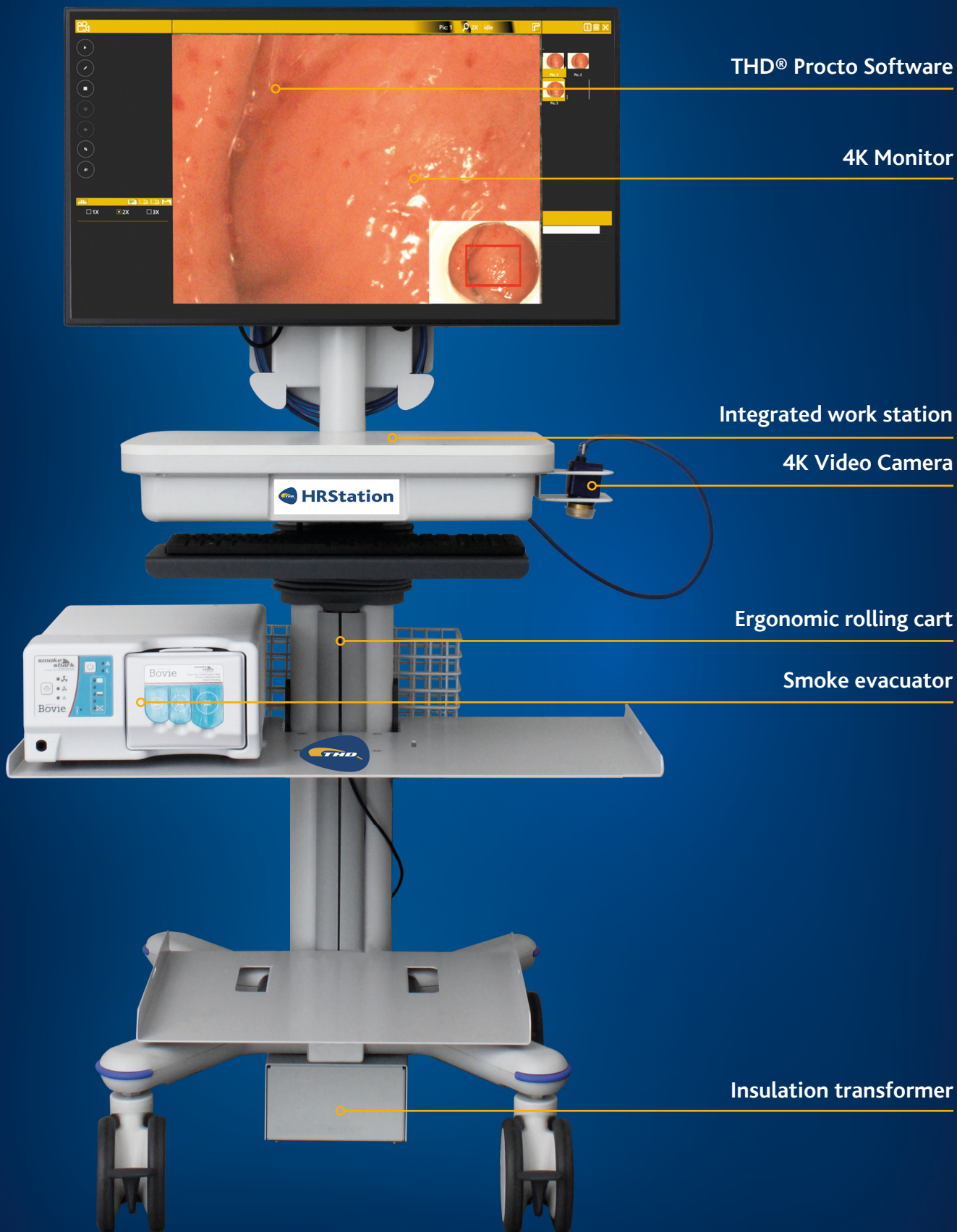
Thanks to recent technological innovations in the proctology field, the **electro-thermal removal of anal lesions** can now be performed during high-resolution anoscopy by means of **special electro-surgical modules** usable with different tips.

Electrosurgery, or electrothermal vessel sealing, allows to **cauterize and thermally close the blood vessels connected to the anal lesions** by means of specific electro-surgical tips. The treatment aims to **eliminate or reduce the blood flow to the anal lesion**. This procedure is normally used for the hemostasis of larger areas.



# THD HRStation

## Functional characteristics



THD® Procto Software

4K Monitor

Integrated work station

4K Video Camera

Ergonomic rolling cart

Smoke evacuator

Insulation transformer

## Integrated work station and 4K Monitor

---

- A computer with up to **4 TB** of dual storage capacity.
- The **4K UHD monitor** with a **32" display** allows the operator to view the images reproduced on the screen even from considerable distances.
- **Windows 10 Professional** Operating System.
- Retractable keyboard.
- Dual USB pedals for easy and intuitive control of the main functions of the THD® Procto Software.



## THD® Procto Software

---

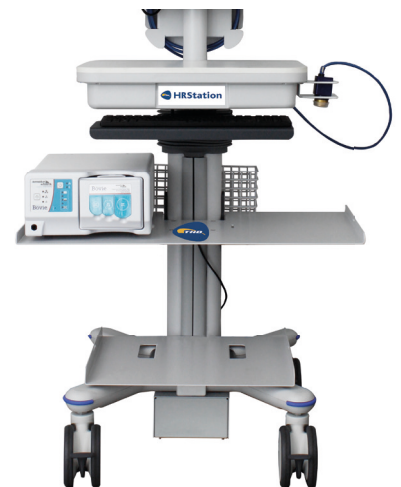
- Dedicated integrated software that allows the user to perform all the diagnostic operations normally carried out during an examination.
- The THD® Procto Software suite offers **modules for the management of users and patients**, and **allows the user to draw up a report for each examination**.
- The software is a **Class IIA Medical Device**.



## THD® Rolling Cart

---

- Innovative and compact design.
- The rolling cart is equipped with a **height adjustment system** so that it adapts to different situations and operators.
- The **rear drag handle** gives easy and excellent maneuverability, while the **4 rotating wheels with integrated brakes** ensure safety and stability.
- Practical integrated basket for objects, accessories, and instruments.
- The **insulation transformer incorporated** in the rolling cart guarantees full compliance of the THD® HRStation with safety regulations on medical devices even within the healthcare facility.



## Smoke Evacuator

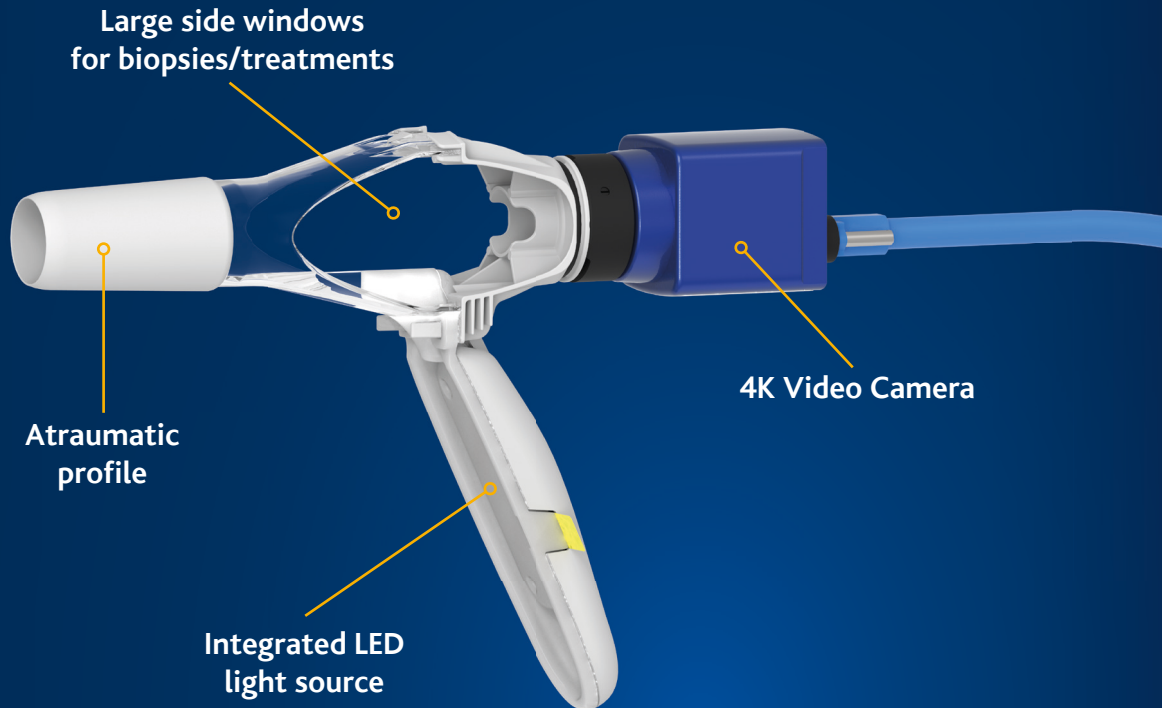
---

- The lightweight, ultra-quiet and compact **smoke evacuator**, equipped with 3 ports for maximum versatility of connections, aims to reduce risks by **removing the surgical smoke generated during ablation**.



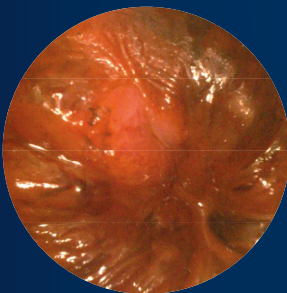
# THD Light-Scope Procto HRA & THD 4K CAM

The best digital vision for HRA

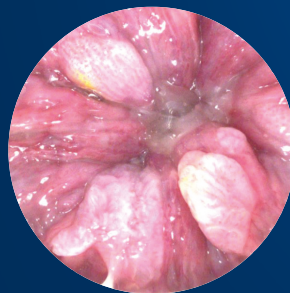


## THD Light-Scope Procto HRA

LUGOL'S SOLUTION



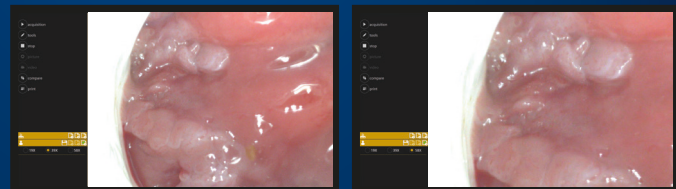
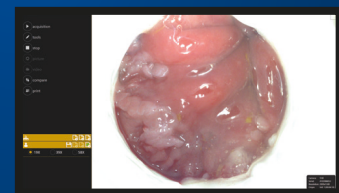
ACETIC ACID



Setting of contrast agents

A predefined setting optimizes the image after administration of Lugol's solution and acetic acid, thus highlighting the lesions, which are visible with magnification.

## THD 4K CAM



39X

58X

Real Time Magnification

In just a few steps it is possible to enlarge magnify the view, going from a standard vision of 19X to 39X, up to 58X during the execution of the examination, so as to highlight even minimal lesions.

# AIN Lesions Treatment

Anal intraepithelial neoplasia lesions treatment options



## COMPONENTS

### HIGH FREQUENCY DESICCATOR

The High Frequency Desiccator is a low-power electrosurgical unit designed for the office setting. This low-maintenance unit is perfect for treatment of anal dysplasia and other High Resolution Anoscopy procedures.

### ELECTROSURGICAL UNIT

The Electrosurgical Unit is a multi-function electrosurgical unit which allows to perform monopolar and bipolar surgical procedures thanks to 5 different standard energy outputs: cutting, coagulation, cutting and coagulation, electrosurgery, and standard bipolar.

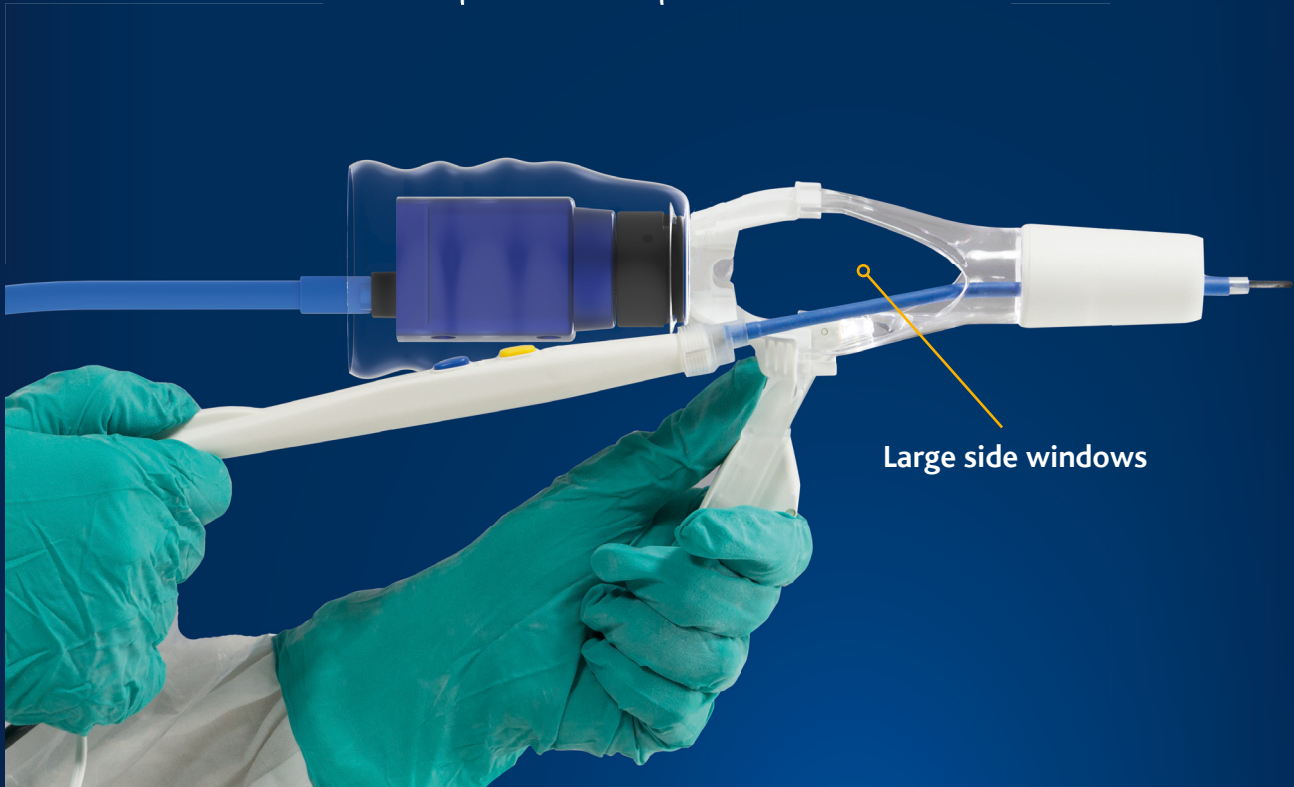
### ELECTROSURGICAL PROBES

THD supplies a complete line of electrosurgical tips to be used in combination with the electrosurgical unit for the removal of anal intraepithelial neoplastic lesions and for other surgical requirements.

These 3 units combined with the Smoke Evacuator and the THD® Light-Scope Procto HRA allow to clear the inspected area from potentially harmful surgical smoke, while performing the ablation procedure.

# AIN Lesions Treatment

How to perform biopsies and treatments



The shape and features of the various tips allow to surgically treat anal neoplastic intraepithelial lesions by ablation, coagulation and electrosurgery, according to the surgeon's specific requirements:

- **6" TIPS FOR ANAL INTRAEPITHELIAL LESIONS WITHIN THE ANAL CANAL**



**Used for fast blood vessel-sealing**

Tip to seal blood vessels during a procedure through electrothermal coagulation. This flexible probe allows providers to achieve infinite angles of treatment.



**Used for accurate ablations**

A Teflon-coated, stainless steel blade that is used to ablate lesions using electrothermal fulguration. This flexible probe allows for providers to achieve infinite angles of treatment.

- **2" TIP FOR PERIANAL INTRAEPITHELIAL LESIONS**



**Used for accurate ablations**

A Teflon-coated, stainless steel blade that is used to ablate perianal lesions using electrothermal fulguration.

# SPECIFICATIONS

## **THD** HRStation

Code 800299-1

Includes Work station and 4K monitor, THD® Procto Software, THD® Rolling Cart to transport other components, THD® 4K CAM, Smoke Evacuator, insulation transformer.



## **THD** Light-Scope Procto HRA

Code 800191-10

Includes Pack of 10 THD® Light-Scope Procto HRA, adapters and video camera protections.



## High Frequency Desiccator

Code THDA942



## A1250 ESU (ELEC SURG UNIT)

Code THDZ1250



## **THD** FUSION FLEX 6" TIPS

## **THD** FUSION 2" TIPS

- 1) THD14-1036
- 2) THD14-1066P



- 3) THD14-1002PA

